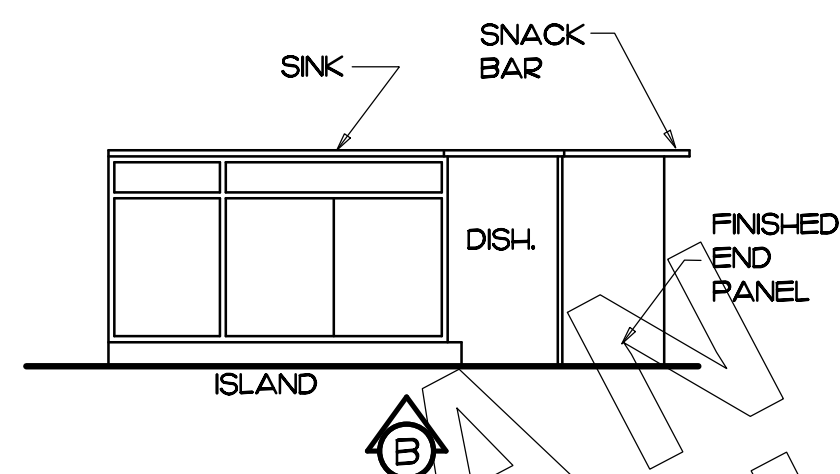
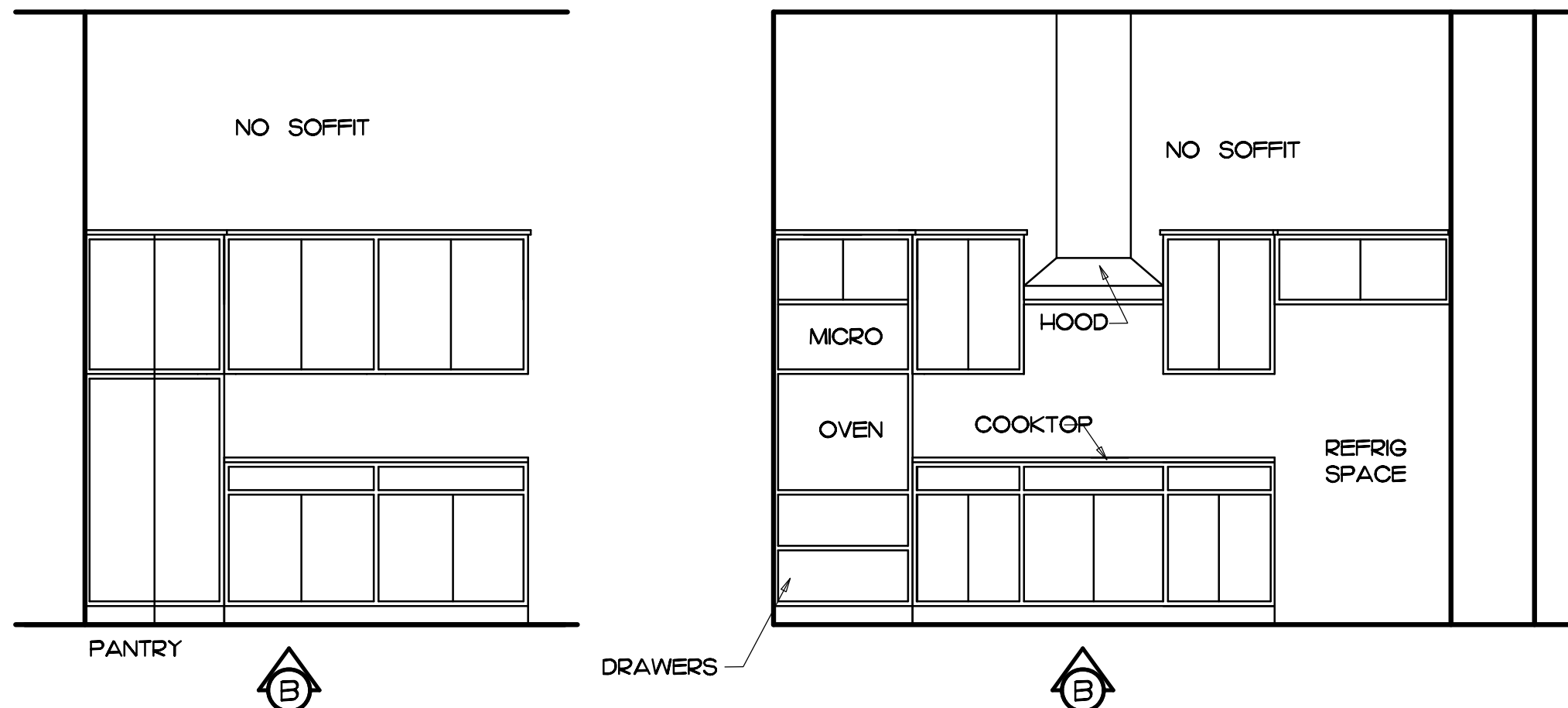


DESIGNER IS NOT AN ARCHITECT OR ENGINEER.
SITE CONDITIONS MAY VARY. DESIGNER CANNOT
WARRANT THE SUITABILITY OF THESE PLANS FOR
YOUR SPECIFIC SITE. CONSULT YOUR CONSTRUCTION
PROFESSIONAL TO DETERMINE THE SUITABILITY OF
THESE PLANS FOR YOUR SPECIFIC SITE.



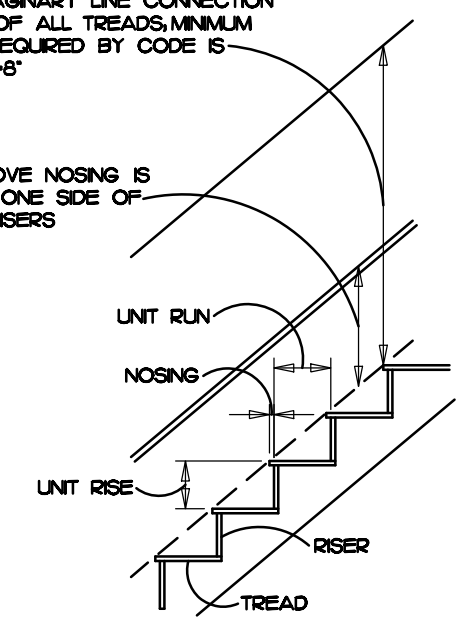
GENERAL NOTES

- CALCULATED DIMENSIONS TAKE PRECEDENCE OVER SCALED DIMENSIONS.
- ALL DIMENSIONS ARE FROM STUD TO STUD. EXTERIOR WALLS ARE DIMENSIONED TO OUTSIDE OF RIGID INSULATION.
- CONTRACTOR TO CONFIRM ALL SIZE/SPACING OF ALL STRUCTURAL MEMBERS.
- ANY STRUCTURAL MEMBERS NOT INDICATED ON PLAN TO BE SIZED BY CONTRACTOR.
- FLOOR LOAD 40# LIVELOAD/15# DEADLOAD
- ROOF LOAD 30# LIVELOAD/20# DEADLOAD
- 500# SOIL BEARING CAPACITY
- EVERY 3RD COURSE OF FOUNDATION TO HAVE HORIZONTAL REINFORCING
- PREFABRICATED FIREPLACES & FLUES ARE TO BE U.L. APPROVED & INSTALLED AS PER MANUFACTURERS SPECS.

INTERIOR ELEVATIONS
SCALE 3/8" = 1'-0"

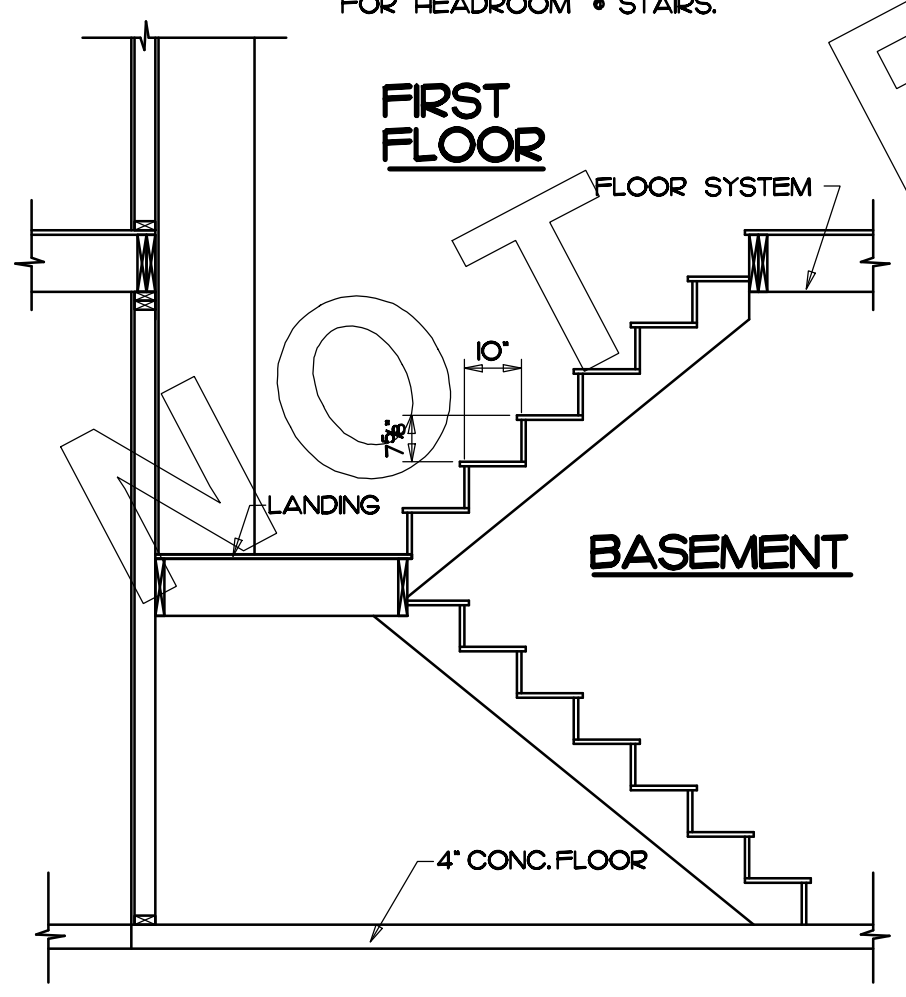
HEADROOM IS MEASURED VERTICALLY FROM AN IMAGINARY LINE CONNECTION THE NOSING OF ALL TREADS. MINIMUM HEADROOM REQUIRED BY CODE IS TYPICALLY 6'-8"

HANDRAIL 34" TO 38" ABOVE NOSING IS REQUIRED ON AT LEAST ONE SIDE OF STAIRS W/ 3 OR MORE RISERS

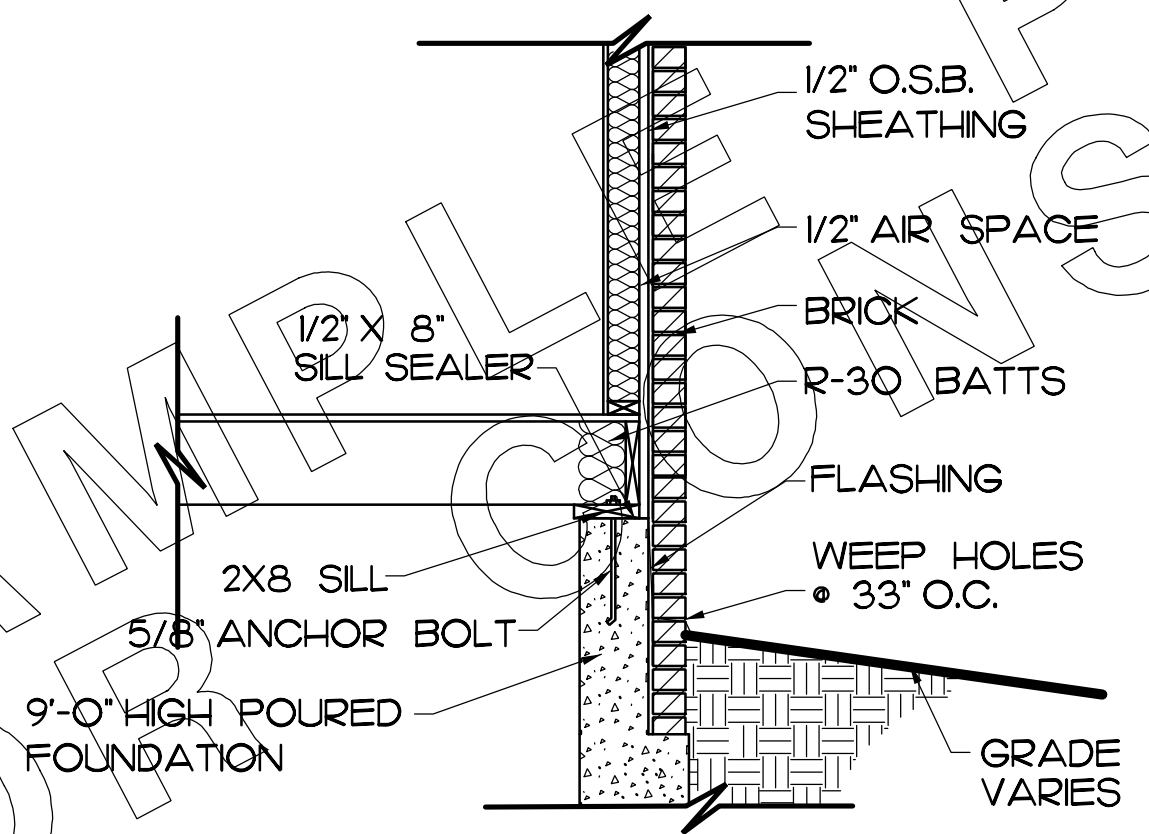


TYPICAL STAIR DIMENSIONS

NOTE: MINIMUM 6'-8" CLEARANCE FOR HEADROOM • STAIRS.



STAIR SECTION
SCALE 3/8" = 1'-0"



BRICK SECTION
SCALE 1/2" = 1'-0"

TABLE
VERTICAL REINFORCEMENT REQUIRED FOR BASEMENT WALLS SUBJECTED TO NO MORE SOIL PRESSURE THAN WOULD BE EXERTED BY AN EQUIVALENT FLUID HAVING A WEIGHT OF 35 POUNDS PER CUBIC FOOT

MATERIAL TYPE	DISTANCE OF WALL TO GROUND SURFACE	MINIMUM WALL THICKNESS IN INCHES ¹	REQUIRED REINFORCING	
			VERTICAL WALL SPAN	REQUIRED VERTICAL REINFORCING
CONCRETE OR SOLID MASONRY	6' OR MORE	8"	8'-8" OR LESS	NO. 5 • 40"
			8'-0" OR LESS	NO. 5 • 48"
		10"	8'-8" OR LESS	NO. 5 • 48"
	8'-0" OR LESS		NO. 5 • 56"	
	8'-0" OR LESS		NO. 5 • 64"	
	15' OR MORE	8"	8'-8" OR LESS	NO. 5 • 48"
			8'-0" OR LESS	NO. 5 • 56"
		10"	8'-8" OR LESS	NO. 5 • 64"
	8'-0" OR LESS		NO. 5 • 64"	
	24' OR MORE	8" OR MORE	8'-8" OR LESS	NO. 5 • 64"
			8'-8" OR LESS	NONE REQUIRED

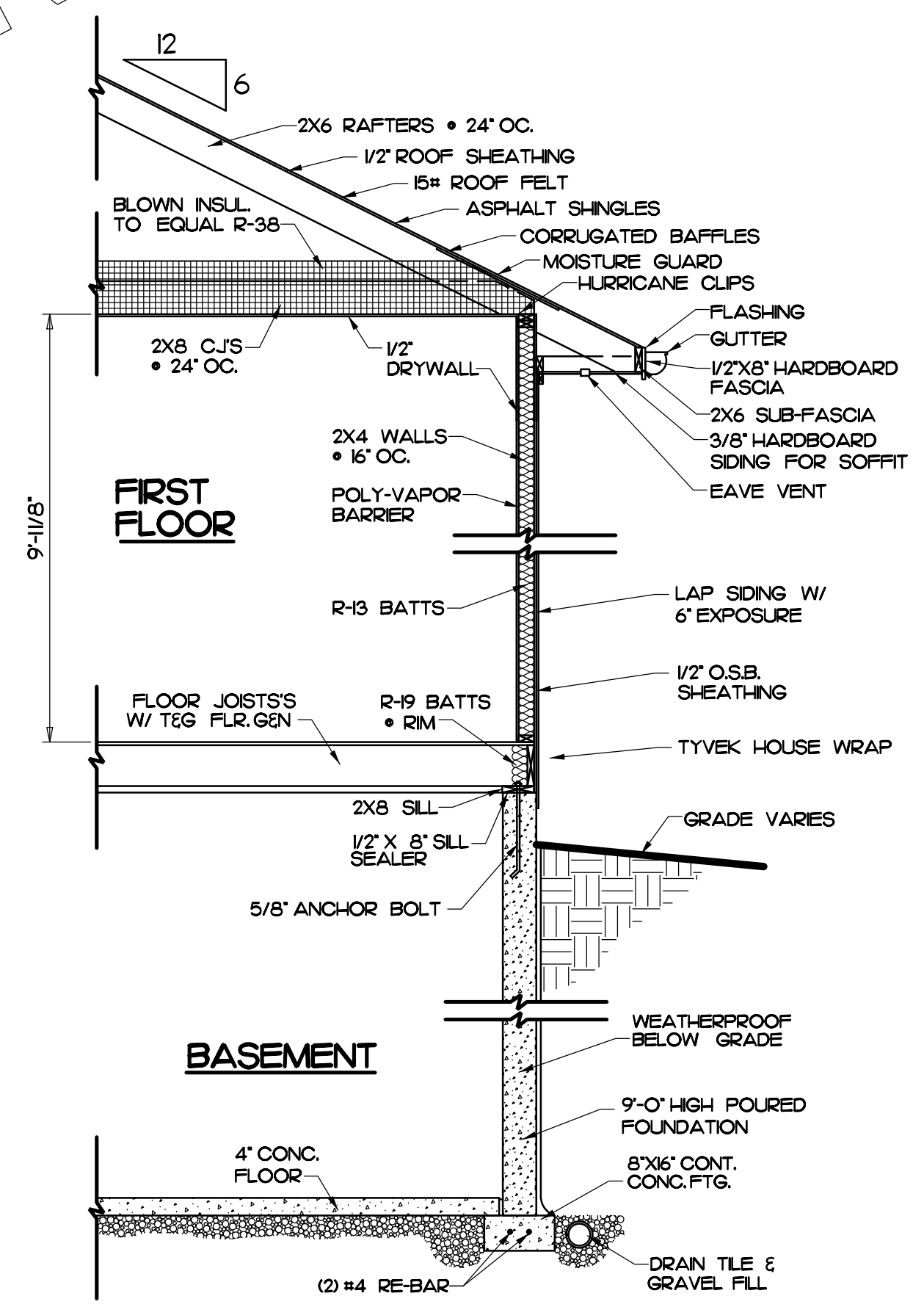
1. APPLIES TO HOLLOW UNIT MASONRY OR TO SOLID CONCRETE WALLS.

2. THE TABLE APPLIES TO TYPICAL BASEMENT WALLS IN THOSE CASES WHERE THE GROUND LINE AT THE OUTSIDE FACE OF THE WALL IS ABOVE THE BASEMENT FLOOR SLAB. THE DISTANCE GIVEN IS TO BE MEASURED FROM THE WALL TOP DOWNWARD TO THE GROUND SURFACE ELEVATION AFTER FINAL GRADING.

3. THE THICKNESSES GIVEN ARE NOMINAL. THE ACTUAL WALL THICKNESS MAY BE THREE-EIGHTHS INCH LESS THAN NOMINAL.

4. THE TABLE APPLIES ONLY TO WALLS WHICH SPAN VERTICALLY BETWEEN LEVELS AT WHICH RESISTANCE TO INWARD MOVEMENT IS PROVIDED. IN THE CASE OF A TYPICAL BASEMENT WALL, THE RESISTANCE SHALL BE PROVIDED BY A FLOOR SLAB AT THE BASE FOR THE WALL AND BY ADEQUATELY ANCHORED FLOOR FRAMING AT THE TOP.

5. THE SIZE AND SPACING GIVEN IS BASED ON THE USE OF GRADE 60 REINFORCING BARS PLACED NOT MORE THAN 1/2" INCHES OR LESS THAN ONE INCH FROM THE INSIDE FACE OF THE WALL (THE SIDE OPPOSITE THE EARTH).



WALL SECTION
SCALE 3/8" = 1'-0"

OLIVIA

ALL RIGHTS RESERVED © 2021

Residential Design Services
402-592-6968

TRK & Associates